



Quilt Guild

srvquiltguild.org

Meeting Time

3rd Thursdays

6:00pm Doors Open

6:30 General Meeting

Meeting Location

Calvary Baptist Church

785 1st St

Idaho Falls, ID

Upcoming Events

March 19 -

Regular Meeting

Mar 20&21 -

Laura Heine Collage
Workshop

April 18 -

Sew Day
Quilted Bow
(be sure to sign up!)

SNAKE RIVER VALLEY QUILT GUILD MARCH 2026 NEWSLETTER

A Sewing Room Chat with the President

Hello my quilting friends!

Things are humming right along behind the scenes, and I'm so excited about all the fun things we have coming up this year.

If you love a little creativity and inspiration, you're going to enjoy this month's meeting. Debi Bucciarelli, our certified instructor for the Collage Workshop on the 20th and 21st, will be giving a trunk show, and I have a feeling we're all going to leave with a few new ideas (and maybe a few new projects added to the pile).

Speaking of piles... we've welcomed several new members already this year, which is fantastic! Be sure to say hello, introduce yourself, and help make them feel right at home. Quilters are the friendliest bunch I know, and I love seeing our guild continue to grow.

We also have our Big Quilted Bow Sew Day coming up on April 18th. There are still a few spots open, and for \$5 you get a fun day of sewing and laughing with friends!

Lots of fun things are being stitched together behind the scenes, and I can't wait to share more soon. Until then, keep quilting... and remember, if anyone asks, the president said it's totally fine to start another project.

Christy Christensen
SRVQG President

Getting to Know...

Candice Clark



Where did you grow up? Have not yet! Butte, Montana.

Tell us about your family: Married to David, 2 boys and 3 Bonus Kids.

Describe yourself in 3 words: Creative, Bold,
and I wear my heart on my Sleeve

What's your favorite quote: get back to me on it.

Do you have a longarm? Which one? Yes, Millie

How did you get started quilting?

Just knew it was something I wanted to learn

What do you wish you knew when you first started to quilt?

I needed more patience.

What is your favorite quilting tool and why? 2.5 x 36" Ruler

What's the coolest quilt you ever made? Get back to me on it

What is your favorite color pallet? anything orange

What do you like about guild? Making Connections!

Is there anything we could do better at Guild? Get back to me on it!



Membership

Hello everybody!

We had 9 new members join us in February bringing our total membership to 128!

The deadline for membership dues is our March meeting 3/19. I will have envelopes available at the meeting for you to drop your check or cash. Just write your name on the envelope (note if your address, phone, or email address has changed, put your payment inside and drop it off at the membership table.

If you are not able to make it to the meeting and would still like to pay your dues, you can mail a check or cash to me at

Renee Estrada
1437 Alayssa Dr.
Idaho Falls, ID, 83402

If I have not gotten a picture of you for our new directory, stop by the membership table to snap a quick picture. We will keep your picture private, this is so we can help put faces to names.

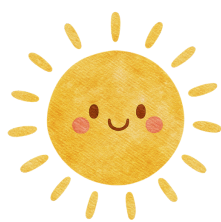
Thanks,
Renee Estrada



Secret Quilter

March is National Quilting Month and a good time to remember your Secret Quilter. Other good times are their birthday month, or during their favorite holiday. Remember to have a name tag visible on the outside of your gift.

Thanks!
Susan Collins



Sunshine

If you know someone who is having a hard time, I'm here to help! I am Robin Tate, excited to spread "sunshine" where it is needed. If someone is a bit blue, not feeling well, or going through a hard time, let me know. I want to ensure all members are feeling loved and part of this wonderful quilt guild family.

You can contact me by emailing sunshine@srvquiltguild.org or by filling out a card at the information desk.



Raffle

Remember your rainy day money to buy some raffle tickets!

There will be some fun SPRING items up for the winning!

2 Tickets for \$1



Education

Please join us for a truck show by **Debi Bucciarelli**, a certified instructor for the collage quilting technique developed by Laura Heine. Debi's quilting journey began in 2012 during her recovery from a stroke, when quilting started as occupational therapy and quickly grew into a true passion. Today she creates and teaches a wide range of quilting techniques and is known for her love of fabric, color, and creative collage design. We're excited to have her share her beautiful work and inspiration with us for our education segment.



Community Support

Christy gave us a Guild Challenge "2026 Hours for 2026" and "100 Quilts".

Keep track of your community service time, including the time you spend working on quilts to give, and report your time at the next meeting.

Have a quilt or two to donate to one of our awesome community charities, bring it to the community service table at the next meeting and put your name on a ticket.

Our awesome community service chair, Trudy Stubbs communitysupport@srvquiltguild.org, facilitates all of our gifts.

Let's stack the hours and quilts in 2026!

Intraguild

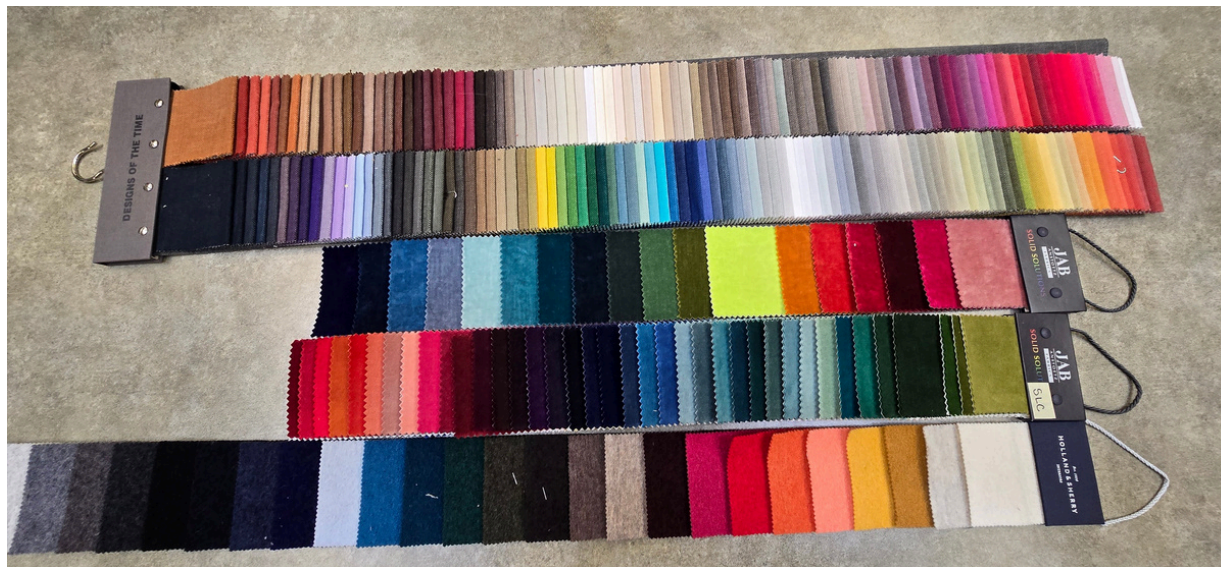
Hello Everyone,

I am excited for our meeting this month! I hope to see a bunch of **March Raffle Blocks!** Remember that if we get enough of this block, I will draw for 2 winners. With the unfinished block size of 16.5", we could have enough blocks to make multiple quilts. This block is not extremely exciting when you look at it by itself, but it makes an amazing quilt!!



March Fat Quarter Raffle Colors

Don't forget to bring your raffle fat quarters. I have included a picture with some color ideas. **This month are colors of the rainbow and our block will have a navy blue background.** I will be providing the background fabric. This quilt will be VERY pretty!



Have you been working on your **Color Wash Scrap Buster** Quilt Blocks?

I have so much fun doing them. Such a good way to use up even the smallest scraps. If you weren't at the February meeting and didn't get an instruction sheet, come see me at my table. The instruction videos are all posted on [the Guild Facebook page](#).

Don't forget to bring along a guest for the **Bring a Friend Challenge**.

Bring them to the Intraguild table and introduce them to me. Get your tickets in the Intraguild Raffle! We can let them flip through an Intraguild folder to see all of the fun things we have in store for the year.

Hope to see you all at the March Meeting!

Shan

Open Positions

If you've ever thought about getting more involved, we still have a couple of board positions open. This is a wonderful way to do it. If you are interested and would like more information, please feel free to reach out to me at

president@srvquiltguild.org



Exhibit Schedule Announcement

The Madeline Reyes Collection



America the Beautiful, May 13 through September 9, 2026



Quilt Heritage Museum,
110 E Center Street, Lava Hot Springs, Idaho.
Call ahead for seasonal days and hours (208) 776-5254.

SNAKE RIVER VALLEY QUILT GUILD BOARD MEMBERS 2026

OFFICERS

President- Christy Christensen
Vice President- Celia Weekes
Secretary- Robbin Gibbons
Treasurer- Candice Clark

COMMITTEE CHAIRS

Charity/Community Support - Trudy Stubbs
Equipment - Christy Christensen
Historian - Melinda Reymann
Intraguild Activities - Shanna Lyon
Membership - Renee Estrada
Newsletter - Jodie Vee
Raffle - Katie Cowling
Retreat Coordinators - Connie Rafferty
Secret Quilters - Susan Collins
Sew-Ins - Open
Sunshine/Courtesy- Robin Tate
Workshops - Christy Christensen & Celia Weekes
Webmaster - Wendy Skinner

If you would like to contribute to the guild please contact a Board Member.



Find us on Facebook!

See photos of recent Show and Tells from Guild Meetings and Sew-Ins. Or Join our group by searching for [Snake River Valley Quilt Guild Group](#).

Newsletter Info

Comments, correction, advertising or other items to be included in the newsletter should be emailed to the editor at srvqgnewsletter@gmail.com

Advertising rates (per month)

\$2.50 for 1/4 page
\$5.00 for 1/2 page
\$10.00 for full page